

## MULTI-JET VANE WHEEL PLASTIC BODY COLD WATER METER

MODEL: LXSC-15E/LXS-15F



广西国量仪表制造有限公司

◆ Measuring the volume of cold (hot) water passing through the pipeline

### FEATURES

1. Available multi-jet liquid sealed or multi-jet dry type mechanism.
2. Dry type, magnet drive, clean dial to guarantee it legible reading, resistance to magnetic interference.
3. Liquid sealed type, digital wheels are sealed in the liquid-capsule and kept legible for reading
4. High quality material applied to guarantee its function efficient and reliable.
5. Available with non-return valve, inlet strainer and pulse output on request.
6. Available with ABS plastic body, PA66 plastic body.
7. Technical data conform to International Standard ISO4064 Class C or ISO4064-2005/R160 for dry type and liquid sealed

### WORKING CONDITION

◆ Water temperature:

≤40°C for cold water meter

### MAXIMUM PERMISSIBLE ERROR

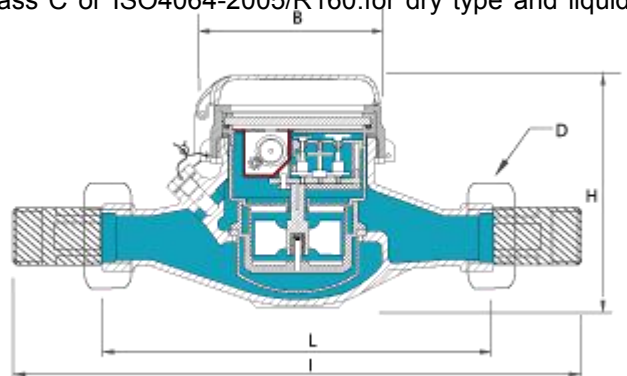
$Q_{min} \rightarrow Q_t (ex Q_t) = \pm 5\%$ ;

$Q_t \rightarrow Q_s (both\ included) = \pm 2\%$  or  $\pm 3\%$  (hot water);

$Q_{min} = \text{Min Flow}$ ,  $Q_t = \text{Transition Flow}$ ,  $Q_s = \text{Max Flow}$ .

### ACCESSORIES

one meter with 2 pcs tubes, 2 pcs nuts and 2 pcs gaskets for coupling.



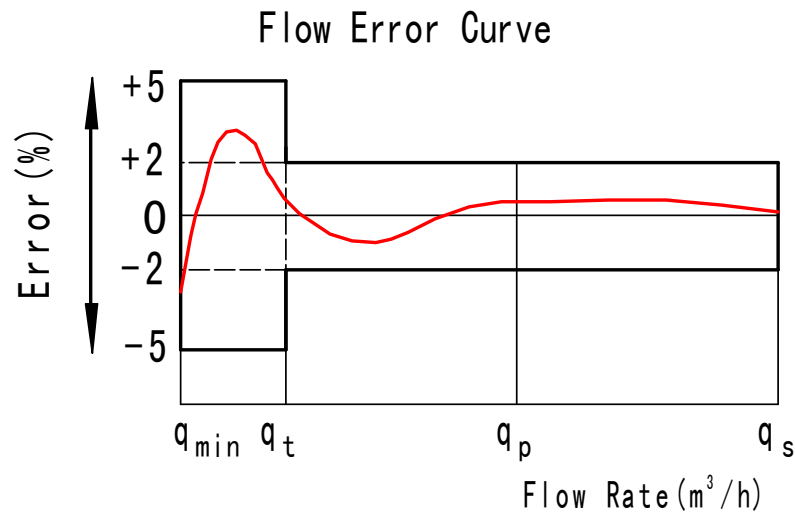
### DIMENSIONS AND WEIGHT

Type	Size	Length	Width	Height	Connecting Thread D	Weight (kg)
	mm					
LXSC-15E	15	165/115	99	115	G 3/4B	0.6

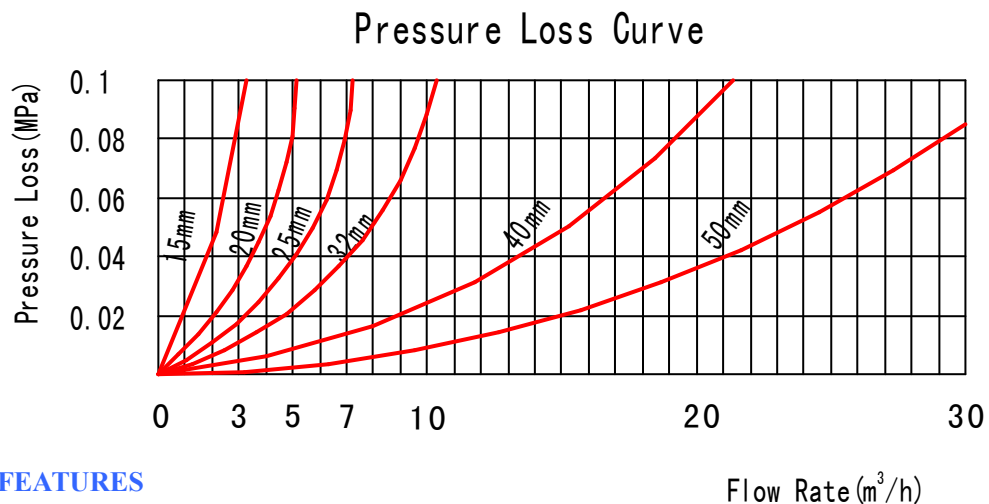
## MAIN TECHNICAL DATA

Type	Size (mm)	Class	q <sub>s</sub>	q <sub>p</sub>	q <sub>t</sub>	q <sub>min</sub>	Min.	Max.
			Max. Flow	Nominal Flow	Transitional Flow	Min. Flow	Reading	Reading
			m <sup>3</sup> /h		L/h		m <sup>3</sup>	
LXSC-15E	15	B/C	3	1.5	120 /22.5	30/15	0.0001	99999

## FLOW ERROR CURVE



## PRESSURE LOSS CURVE



## APPLICATION AND FEATURES

- ◆ Applied for remote automatic reading system.
- ◆ Meter with pulse output: Available 1L, 10L, 100L or 1000L per pulse for choice.
- ◆ Water meter equipped with a Reed Switch Pulser which can be connected to remote reading systems. The Reed Switch Pulser emits signal to collector, a single signal means a certain quantity of water.
- ◆ Different option of water quantity per pulse is alternative and data refers to the mentioned table format below.

## REED-SWITCH ELECTRIC DATA

Switch voltage: 24VAC/ DC

Switch current: 0.01A max

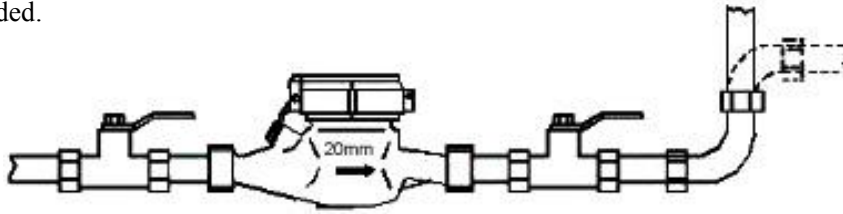
## OUTPUT DATA:

Size	Pulse output			
	1L/Pulse	10L/Pulse	100L/Pulse	1000L/Pulse
15mm	√	√	√	√

## Installation Instruction-----domestic water meter

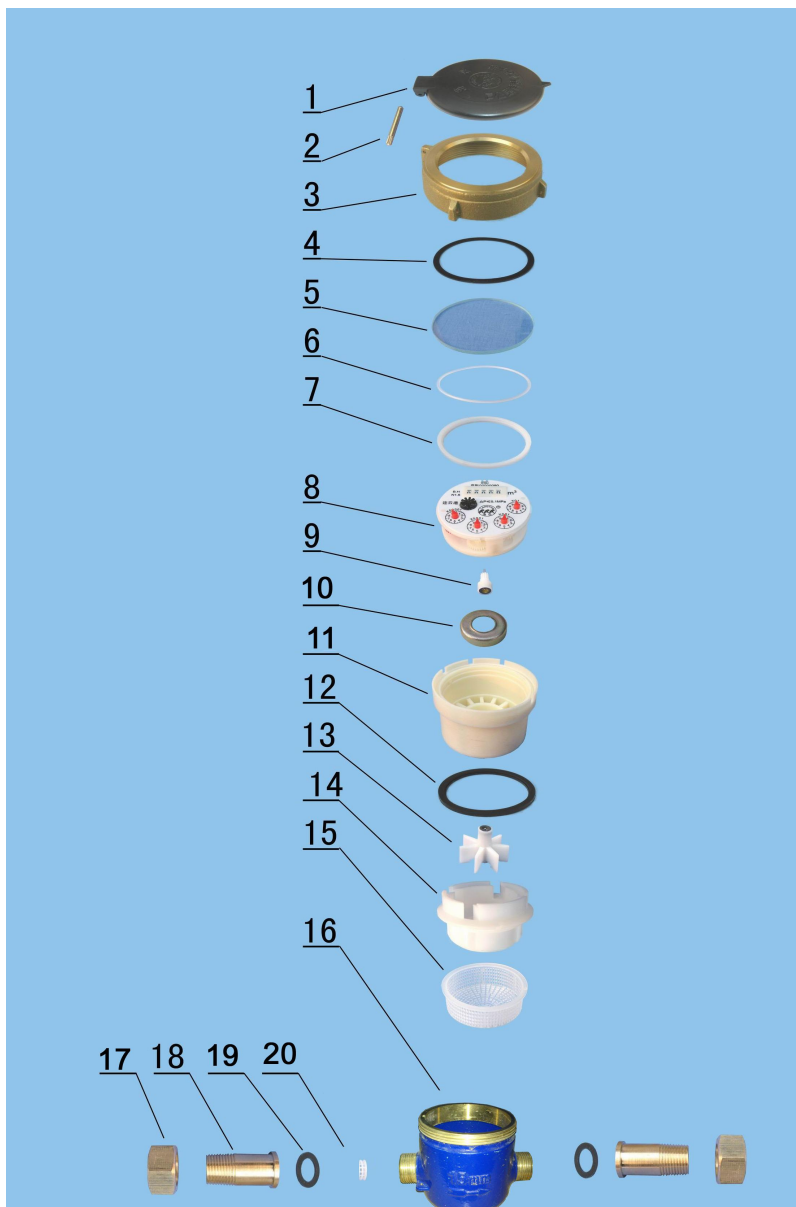
- Location for water meter must be accessible and far away from fog and humidity.

- This type water meter is horizontally installed only; verticality or slant installation is rejected. The arrow branded in the meter must correspond with the flow direction in the pipeline.
- Thoroughly flush remainder/debris in the pipe before connecting water meter with pipeline.
- For more accuracy the pipeline downstream the meter is recommended to elevate 500mm higher than the water meter level. (Illustrated below). perature 100 °C for hot water meter, 50 °C for cold water meter, can not be exceeded.



- If the meter services for a boiler, it is required to install a non-return valve at outlet of the meter.
- The indicated QN & pressure , maximum tem
- Cleanse the strainer once every 3 years or so. Meanwhile retest the meter before re-installation. Generally the job should be done by the water supply administration department.

## EXPLODED VIEW



Code	Description	Material	QTY
1	Lid	ABS	1
2	Hinge Pin	ABSorPA66	1
3	Cap	ABSorPA66	1
4	Sliding Gasket	PP	1
5	Glass	Tempered Glass	1
6	O-ring	Silicon Rubber	1
7	Register Fixing Ring	ABS Plastic	1
8	Register	Assembly	1
9	Central Gear	Component	1
10	Magnetic Shield Ring	Iron	1
11	Gearing box	ABS Plastic	1
12	Tightening Gasket	Rubber	1
13	Turbine Component	Component	1
14	Measuring Chamber	HIPS	1
15	Bottom Strainer	PP	1
16	Body	ABS or PA66	1
17	Coupling Nut	ABS or PA66	1
18	Coupling Tail Piece	ABS or PA66	2
19	Coupling Gasket	Rubber	2
20	Inlet Strainer	PP	2